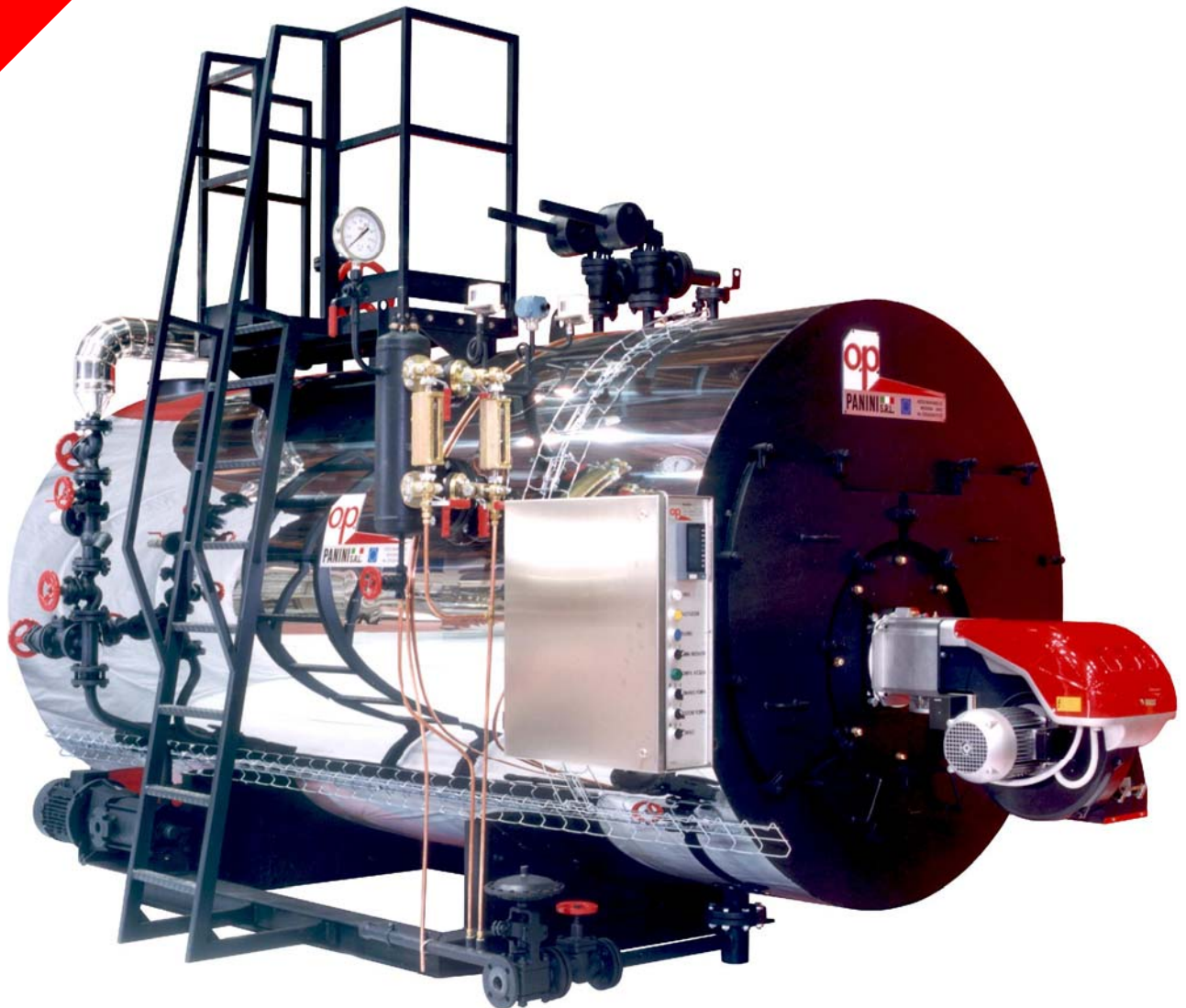




PANINI

ENGLISH 

**ROUNDED
WET-END**



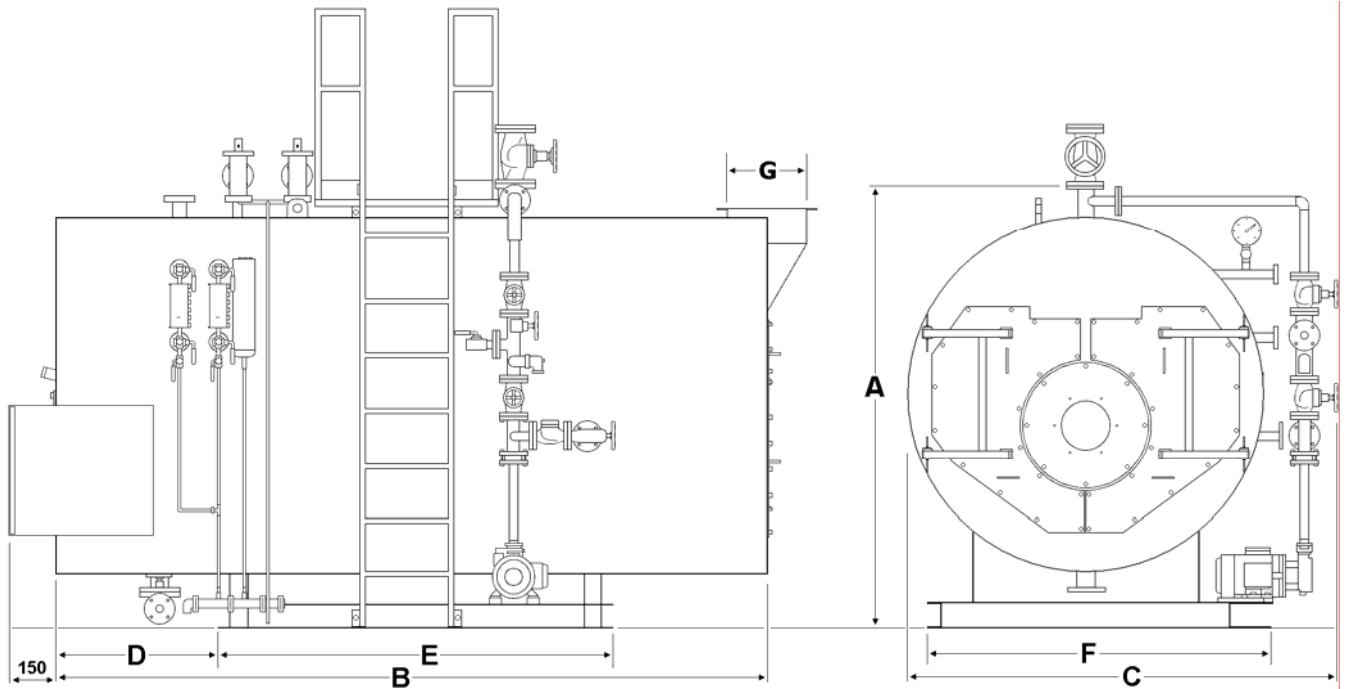
SPECIAL

3-PASS STEAM BOILER

CHARACTERISTICS

The *Special* steam boiler features a wide furnace and 3-pass fire tubes, with a special rounded wet-end to minimize reinforcement studs that lose heat.

- Special rounded wet-end to improve smoke flow and facilitate maintenance.
- Optional airflow spoilers in fire-tubes to improve heat transfer
- Hinged doors on the front and rear smoke boxes for easy cleaning and maintenance
- Wide furnace for increased radiation and low thermal loading
- Designed for gas, light oil or heavy oil burners
- Working pressure 1,2 or 1,5 MPa (12 or 15 bar)



MODEL	STEAM Kg/h	POWER ¹ Kw	DIMENSIONS mm							CAPACITY liters		WEIGHT Kg
			A	B	C	D	E	F	G	TOTAL	WORKING	
Special 40	2000	1400	2270	4000	2240	760	2540	1600	400	4600	3260	6800
Special 48	2500	1750	2270	4000	2240	760	2540	1600	400	4530	3190	7000
Special 65 Eco	3000	2100	2510	3860	2470	750	2360	1850	400	6080	4900	8310
Special 65	3500	2450	2510	3860	2470	750	2360	1850	400	6080	4900	8310

1) The declared power is calculated based on the industry standard feed-water temperature of 90°C.
Note: The data in the table are subject to change.