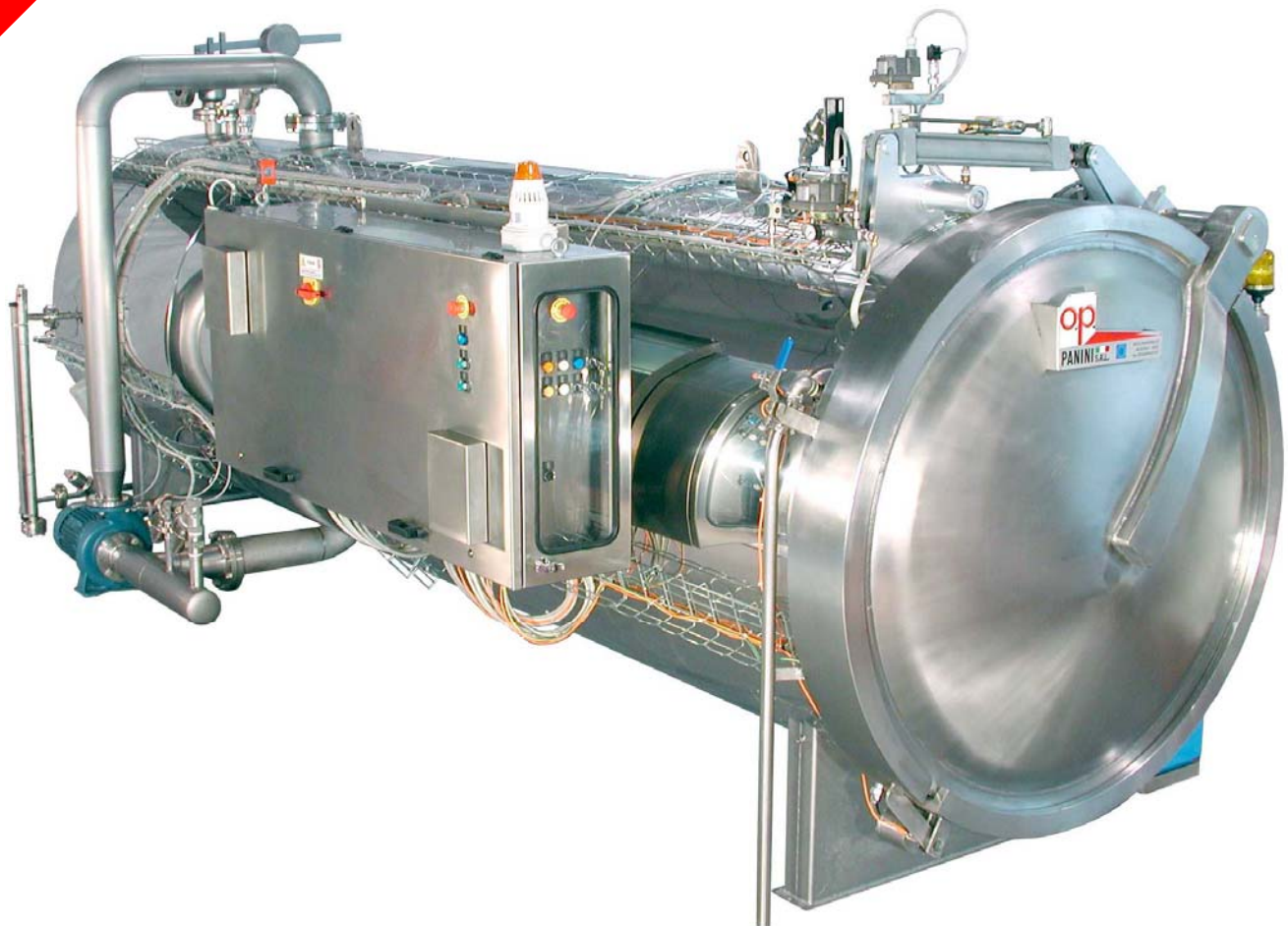




PANINI

ENGLISH 

**STEAM
AND WATER**



UNIVERSAL-DUAL

STERILISATION RETORT for
STEAM or HOT-WATER PROCESSING

UNIVERSAL-DUAL

Sterilization retort for canned food products. Can process in direct steam or hot-water spray, to give most flexibility for plants with varied production. Steam processing is more efficient and requires less come-up time than hot-water processing, and is recommended for delicate containers. Hot-water spray is best for products that are heat-sensitive and can also pasteurize at temperatures below 100°C.

CHARACTERISTICS

- Choice for each process of either direct steam heating with fan circulation or hot-water spray heating
- Cold-water spray cooling with circulation pump to reduce water consumption and improve temperature uniformity also in the cooling steps
- Air overpressure for the duration of the process
- Fan circulates the steam / air during heating for maximum temperature uniformity when processing in steam
- High-flow circulation pump for maximum temperature uniformity when processing with hot-water spray

CHARACTERISTICS OF UNIVERSAL LINE

- Max working pressure 4 bar (up to 150°C)
- Diameters of 1200, 1400, 1600, 1800 and 2000 mm
- Lengths from 2000 to 8000 mm
- Built in stainless steel AISI 304 or 316
- Standard approval PED 23/97CE (also available American ASME, Russian GOST, Chinese SQLO, Romanian ISCIR, Polish UDT and others upon request)
- Complies with American USDA 21 CFR 113.40 norms for LACF (low-acid canned food) sterilization retorts.

VALVE KITS

The Universal-Dual model is designed for double valves for maximum precision in process control:

- | | | |
|-------------|--------------|--------------|
| 1. Safety | 4. Steam x 2 | 7. Misting |
| 2. Vent x 2 | 5. Water x 2 | 8. Hot Water |
| 3. Air x 2 | 6. Drain | 9. — |



MODEL	DIMENSIONS mm			WEIGHT KG
	L	W	H	
Ø1200 x				
2000	3150	1750	2010	1170
3000	4150	1750	2010	1380
4000	5150	1750	2010	1590
5000	6150	1750	2010	1800
Ø1400 x				
3000	4250	1950	2310	2430
4000	5250	1950	2310	2690
5000	6250	1950	2310	2950
6000	7250	1950	2310	3190
Ø1600 x				
3000	4250	2150	2510	2430
4000	5250	2150	2510	2690
5000	6250	2150	2510	2950
6000	7250	2150	2510	3190
Ø1800 x				
3000	4250	2350	2710	2430
4000	5250	2350	2710	2690
5000	6250	2350	2710	2950
6000	7250	2350	2710	3190

Other sizes upon request. The actual specifications may vary due optional components or product improvements.

