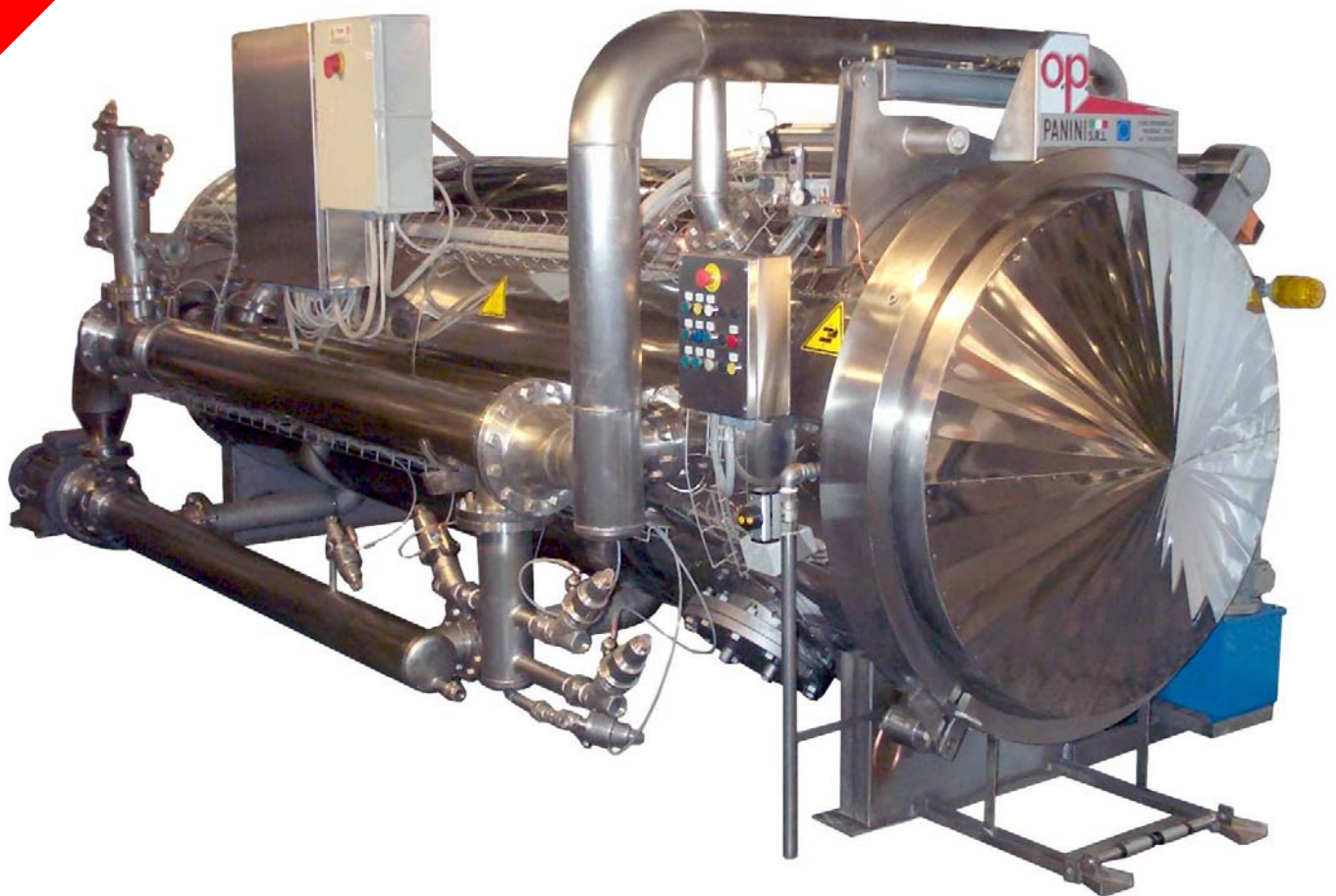




PANINI

ENGLISH 

WITH
HEAT EXCHANGER

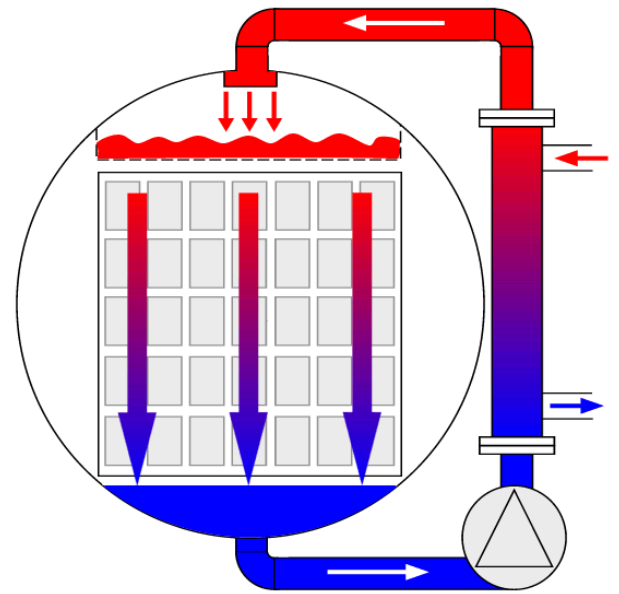


UNIVERSAL-SoftRAIN/SC

STERILIZATION RETORT WITH HEAT EXCHANGER

UNIVERSAL-SoftRAIN /SC

Sterilization and pasteurization retort for canned food products, designed for hot-water spray processing and featuring air overpressure control for the complete cycle. Recommended for tin cans, glass jars and heat-sensitive products. The hot-water spray cycle can also be used to pasteurize at temperatures below 100°C. The retort sterilizes by bathing the product with a low-pressure water shower, through a distribution manifold. A low pressure shower allows significant electrical power savings in the circulation pump. The water is heated by a heat exchanger, fed by steam in a closed circuit.



CHARACTERISTICS

- Hot-water SoftRAIN® sterilization with process water heated by steam indirectly through a heat exchanger
- Cold-water SoftRAIN® cooling with process water cooled by water indirectly through a heat exchanger
- Air overpressure during hot and cold steps
- Using the heat exchanger in the cold steps allows completely sterile processing
- Using the heat exchanger in the hot steps allows the complete reuse of steam condensate

CHARACTERISTICS OF UNIVERSAL LINE

- Max working pressure 4 bar (up to 150°C)
- Diameters of 1200, 1400, 1600, 1800 and 2000 mm
- Lengths from 2000 to 8000 mm
- Built in stainless steel AISI 304 or 316
- Standard approval PED 23/97CE (also available American ASME, Russian GOST, Chinese SQLO, Romanian ISCIR, Polish UDT and others upon request)
- Complies with American USDA 21 CFR 113.40 norms for LACF (low-acid canned food) sterilization retorts.

VALVE KITS

The Universal-SoftRAIN /SC model is designed for double valves for maximum precision in process control:

- | | | |
|-------------|--------------|-------------------|
| 1. Safety | 4. Steam x 2 | 7. — |
| 2. Vent x 2 | 5. Water x 2 | 8. Hot Water Fill |
| 3. Air | 6. Drain | 9. — |

| MODEL | DIMENSIONS mm | | | WEIGHT KG |
|----------------|---------------|------|------|-----------|
| | L | W | H | |
| Ø1200 x | | | | |
| 2000 | 3150 | 1750 | 2010 | 1170 |
| 3000 | 4150 | 1750 | 2010 | 1380 |
| 4000 | 5150 | 1750 | 2010 | 1590 |
| Ø1400 x | | | | |
| 3000 | 4250 | 1950 | 2310 | 2430 |
| 4000 | 5250 | 1950 | 2310 | 2690 |
| Ø1600 x | | | | |
| 3000 | 4250 | 2150 | 2510 | 2430 |
| 4000 | 5250 | 2150 | 2510 | 2690 |
| Ø1800 x | | | | |
| 3000 | 4250 | 2350 | 2710 | 2430 |
| 4000 | 5250 | 2350 | 2710 | 2690 |
| Ø2000 x | | | | |
| 3000 | 4300 | 2550 | 2910 | 2850 |
| 4000 | 5300 | 2550 | 2910 | 3150 |

Other sizes upon request. The actual specifications may vary due optional components or product improvements.

