



PANINI

ENGLISH 

**ELECTRIC
HEATING**



COMPOSITE FIBER AUTOCLAVE

 **FORMULA-1-E** 

WITH ELECTRIC HEATING

FORMULA-1-E

Composite fiber curing autoclave featuring electric heating by an array of independent heating elements. A good alternative to the classic diathermal oil autoclave, interesting for small production volumes and research facilities, because it simplifies installation, requires little space and no capital outlay for oil piping or heaters.

CHARACTERISTICS

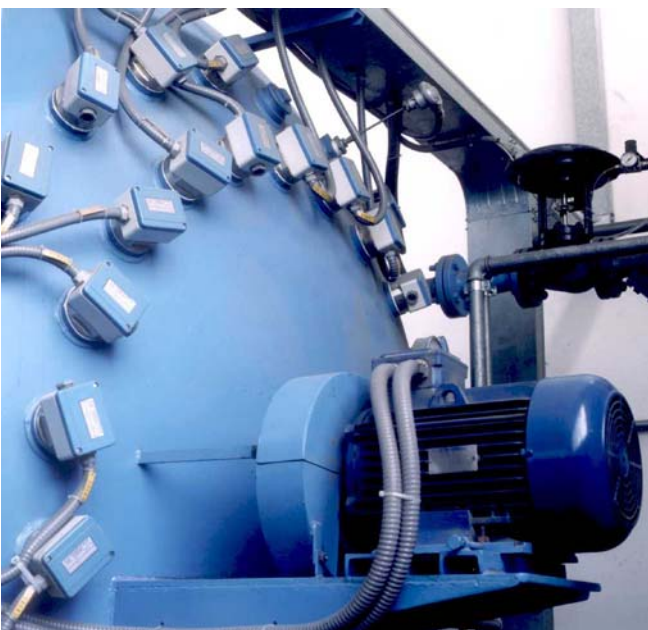
- Diameter from 1200 to 2500 mm
- Length from 2000 to 10.000 mm
- Temperature up to 250°C
- Pressure up to 10 bar
- Heating by array of electric elements
- Water-cooled through an aluminum/copper heat exchanger
- European PED approved pressure shell
- Fan-forced air circulation, for $\pm 2^\circ\text{C}$ temperature uniformity.
- Inside insulated with ceramic fiber with steel sheet finishing
- Compressed air overpressure (optional nitrogen system)
- Manifold flange for inserting temperature probes to record ambient and product temperature, in number requested



VACUUM BAG ATTACHMENTS

STANDARD ACCESSORIES

- Cycle cut-off safety system to protect workers who enter the autoclave (for $\varnothing 1600$ and above)
- Vacuum pump



ELECTRICAL HEATING ELEMENT ARRAY

CONTROL PANEL

Several models of control panel for different system capabilities, with optional integrated industrial PC or external PC supervision.

BAG VACUUM SYSTEM

- $\frac{1}{2}$ " tube attachments for bag vacuum/vent control, in axial or vertical layout, in number requested
- $\frac{1}{2}$ " tube attachments for bag vacuum check, in number requested
- Optional bag vacuum recording system
- Optional automatic vacuum/vent/check system with pressure transducers and pneumatic valves

OPTIONAL ACCESSORIES

- Custom designed removable loading rack to hold product in autoclave during the cycle
- Nitrogen pressure system for flammable materials
- Vent muffler, vacuum hoods, oxygen analyzers